



# LINGUISTICS



# Ph.D.

Doctor of  
Philosophy  
Program



DOCTOR OF PHILOSOPHY PROGRAM IN LINGUISTICS

**Course revision 2022**

The Research Institute for Languages and Cultures of Asia (RILCA)  
Mahidol University



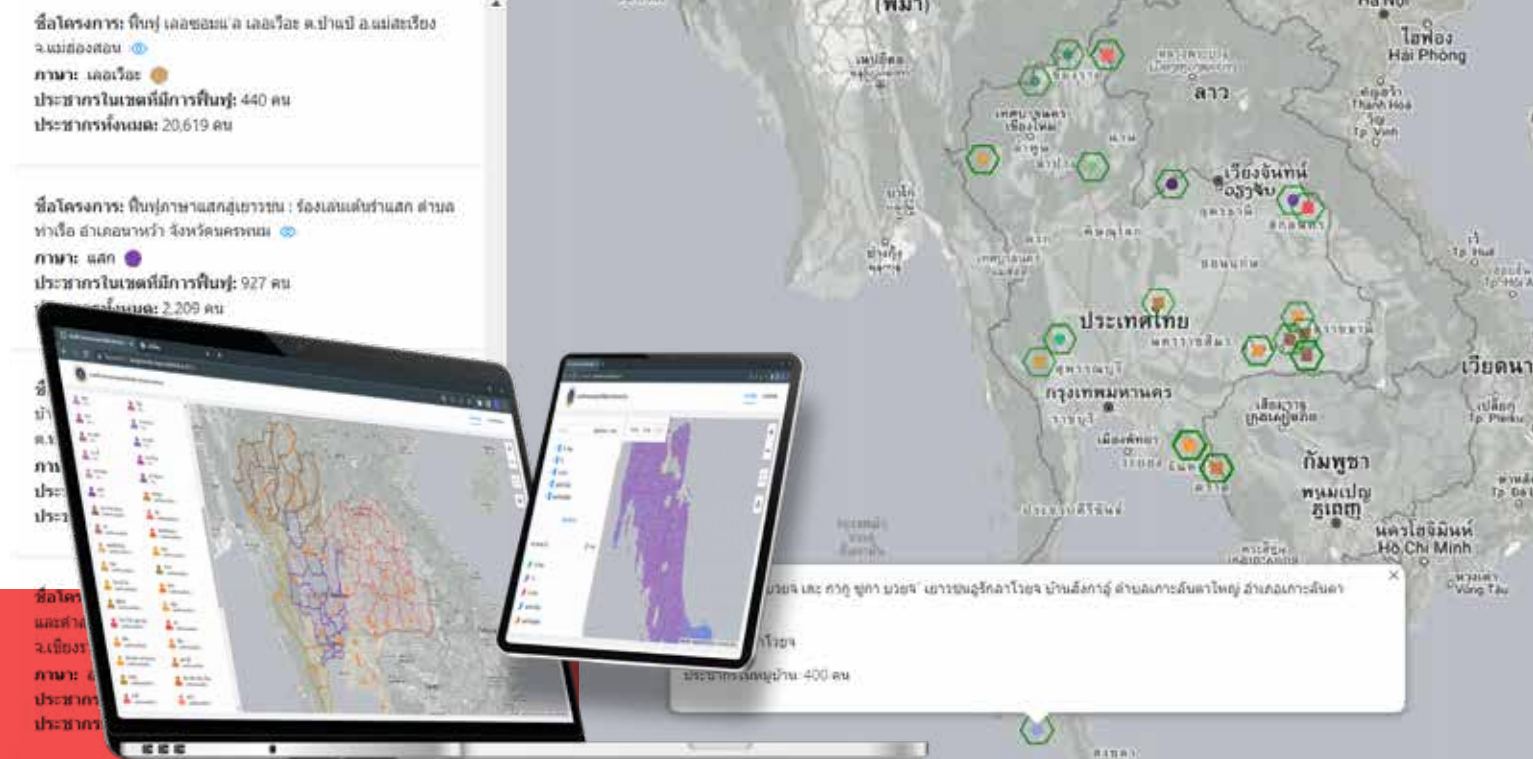
ONLINE ADMISSION  
[www.grad.mahidol.ac.th](http://www.grad.mahidol.ac.th)

**Asst. Prof. Dr. Mayuree Thawornpat**  
Program Chairperson

☎ +66 87 8081420

✉ [mayuree.tha@mahidol.ac.th](mailto:mayuree.tha@mahidol.ac.th)

📍 RILCA Linguistics Program, Mahidol University



The course focuses on developing scholars and researchers in linguistics focusing on a multilingualism and multiculturalism at an international level. The program encourages students to express academic creativity and be able to pioneer and independently seek new knowledge and expertise that can be continually integrated and applied in other sciences. Students will be able to use the knowledge gained to contribute to the development of a multilingual and multicultural society and promote the preservation of linguistic and cultural diversity on the national level and in Asia. The aim is to foster a better understanding and respect for diversity and facilitate a reduction in inequality in language and culture dimension of society.

## WHAT MAKES OUR COURSE STAND OUT?

**1** The program encourages students to have direct experience in conducting research in languages and linguistics with guidance from instructors.

**2** The course content covers both linguistic theory and applied linguistics. Students can choose to specialize in a variety of elective subjects to build their expertise

- Language technology
- Language and linguistics
- Language for education and sustainable development
- The group of theory of linguistics and school of thinking

**3** There is an opportunity to exchange knowledge and keep abreast of research trends in language and linguistics with local and international experts.

## When do you study?

**Regular part during office hours** (Monday - Friday)  
*Remark: Class is instructed in Thai and it is flexible. Students can adjust the study time to suit their schedules. The class is hybrid (Online and Onsite).*

## Career Opportunities

- 🎓 Researcher, language and linguistic scholar
- 🎓 Academic or developer in public and private organizations.
- 🎓 Language and culture educator
- 🎓 Self-employed professional associated with linguistics majors (interpreters, translators and tutors).

## What will you study?

(Courses Examples)

- 🎓 Digital Lexicography
- 🎓 GIS Technology and Geolinguistics
- 🎓 Big Data Warehouse Design and Management for Language and Local Wisdom Documentation
- 🎓 Linguistic Theories for Online Social Media Analysis
- 🎓 Theories in Corpus Linguistics and Applications



More Information



How to apply & Online Admission

## WHAT ARE THE EXPENSES?

Regular Program

**Plan 1 (1) :** Thesis (Master's Degree graduates)  
**Plan 2 (1) :** Course work and thesis (Master's Degree graduates)

**180,000 THB**

5 academic years  
**Plan 2 (2) :** Course work and thesis (Bachelor's Degree graduates)

**300,000 THB**

Remrk: The expenditure is the same for all study plans, both for Thai and international students.